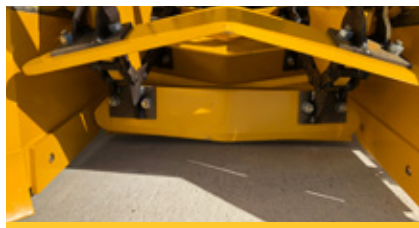


E1050

FORCE FEED LOADER



MAXIMUM VERSATILITY.

Engineered to perform in a variety of applications year-round, the E1050 picks up soil, asphalt millings, snow, debris and other windrowed materials for high production material transfer.



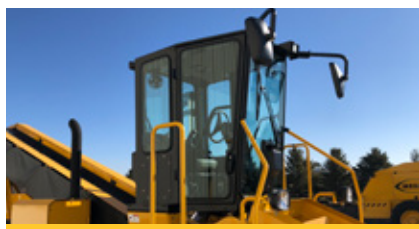
HIGH PRODUCTION.

30" (762 mm) variable speed and reversible conveyor belt with 600 fpm (183 m/min) max speed discharges material directly behind or to either side of the conveyor with the optional 180° swivel conveyor.



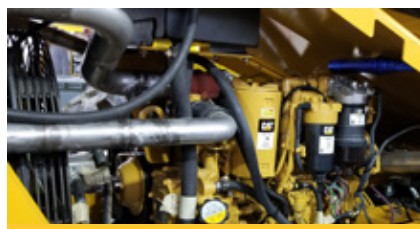
INNOVATIVE CONTROLS.

Modern electronic controls reduce the need for adjustment and are located within easy reach of the operator. Optional heated and air conditioned cab and radio for optimal operator comfort.



EXCELLENT VISIBILITY.

Full cab height windows provide excellent visibility. Cab is accessible from either the left or right side. Optional camera system with two cameras and full color 7" (178 mm) screen provides visibility around the machine.



OPTIMIZED PERFORMANCE.

The E1050 is powered by a Cat® C4.4 engine with 137 hp (102 kW). The feeder chain and conveyor are driven by high-torque, direct-drive motors eliminating high wear planetary gear boxes.



FAST SERVICE.

Ground level battery access, large engine access doors and Caterpillar dealer service and support keep your machine up and running.

E1050 SPECIFICATIONS

WEIGHT	20,160 lb	9144 kg	FEEDER PADDLE WIDTH	36"	914 mm	ENGINE	Cat® C4.4 Tier 4	
LENGTH	34' 1"	10.38 m	FEEDER PADDLE HEIGHT	6"	152 mm	GROSS POWER	137 hp	102 kW
WIDTH	8'	2438 mm	CONVEYOR LENGTH	28'	8.5 m	FUEL CAPACITY	60 gal	227 L
MIN HEIGHT	10' 6"	3200 mm	BELT WIDTH	30"	762 mm	HYDRAULIC CAPACITY	54 gal	204 L
MAX HEIGHT	11' 7"	3530 mm 3'	MAX BELT SPEED	600 fpm	182 m/min	DEF CAPACITY	5 gal	19 L

POWERTRAIN

Cat® C4.4 Tier 4 engine with 137 hp (102 kW)
6-Speed hydrostatic ground drive
Max speed of 24 mph (38.6 k/hr)
17' (5.18 m) turning radius
12 volt electrical system
One 12 volt, 835 CCA battery
225/70R22.5 12 ply front tires
14 x24, 16 ply rear tires

OPERATING ENVIRONMENT

Full enclosed cab with full height windows
Left and right side cab access
Electronic controls
Full color LCD monitor with machine diagnostics
Optional heated and air conditioned cab
Optional camera system with two (2) wireless cameras
Optional radio

MATERIAL DELIVERY

Hydraulically adjustable moldboard with float position
Feeder chain powered by high-torque, direct-drive motor
Hydraulically raised and lowered conveyor
Variable speed conveyor with 600 fpm (182 m/min) max speed
Heavy-duty belt with 5/8" (15.8 mm) chevron cleats
28' (8.5 m) conveyor length
30" (762 mm) belt width
Optional 180 degree swivel conveyor

SALES AND SERVICE

Sold and serviced exclusively through Caterpillar dealers worldwide.

WWW.WEILERPRODUCTS.COM

SERVICE/MAINTENANCE

Ground level battery access
Braided electrical harnesses and sealed connections
12-volt electric system with automotive-type fuses
Large engine access doors

OPTIONAL EQUIPMENT

180 degree swivel conveyor
Stand for swivel conveyor
Heated and air conditioned cab
Beacon light
Radio/CD/Speaker
Truck signal lights
DC blade lights (3 lights)
7" (178 mm) display with 2 wireless cameras

WARRANTY

12 months standard. Extended warranty available.